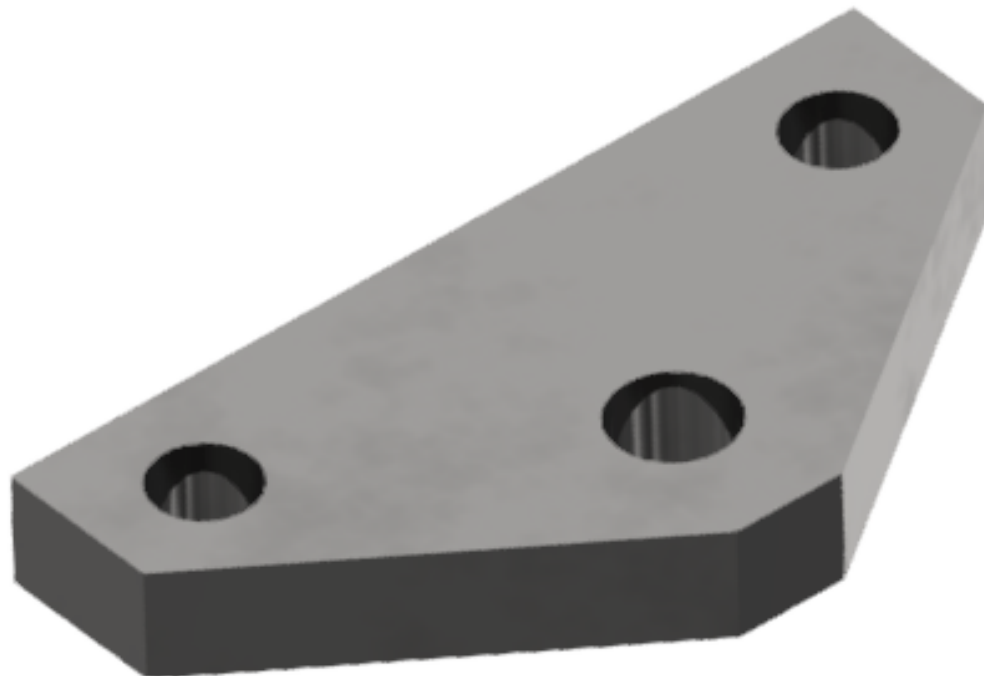
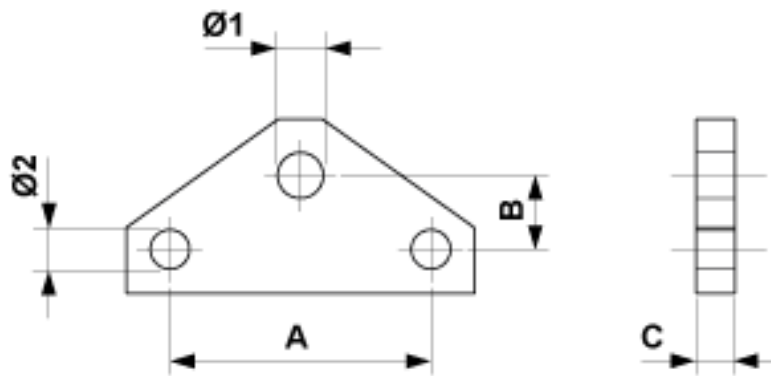


# Plaque triangulaire simple

Référence E1624-01





### Dimensions

Ø2: 18 mm  
C: 20 mm  
A: 120 mm  
B: 34 mm  
Ø1: 21 mm

### Matériel et poids

Matériel: Acier galv.  
Poids: 1.300 kg

### Charges

Charge de rupture: 110 kN