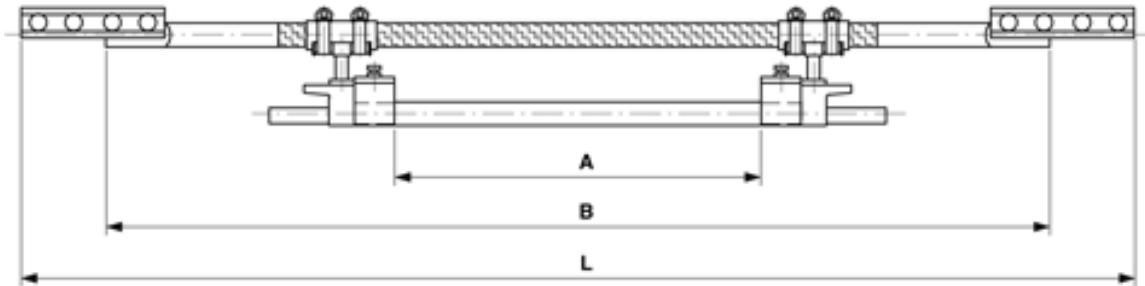


103103

**SECTION INSULATOR ETB 1200 V WITHIN COPPER TUBE, SIMPLE, FOR 1  
GROOVED CONTACT WIRE 100-120 MM<sup>2</sup>**



**DIMENSIONS**

B: 946 mm

L: 1116 mm

A: 368 mm

**LOADS**

Breaking load: 80 kN

Nominal working tensile load: 15 kN

**SPECIFICATION**

Operating voltage: 1200 V DC

Creepage distance: 368 mm

**PART LIST**

1	301759
2	D2174-01
2	D0837-01
2	D0804-01
1	D0132-01