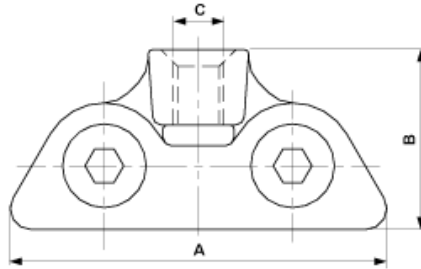


B0348-04

CONTACT WIRE CLAMP ETB WITH THREAD M16, FOR GROOVED CONTACT WIRE 100-120 MM²



DIMENSIONS

C: M16

B: 43 mm

A: 90 mm

MATERIAL AND WEIGHT

Material: CuAl

Weight: 0.205 kg

COMMENTS

- For grooved contact wire 80 till 120 mm²
(Other contact wire sections on request)
- Tightening torque on installation
Counterstunk screw M14 - 40 Nm (29.5 lbf)