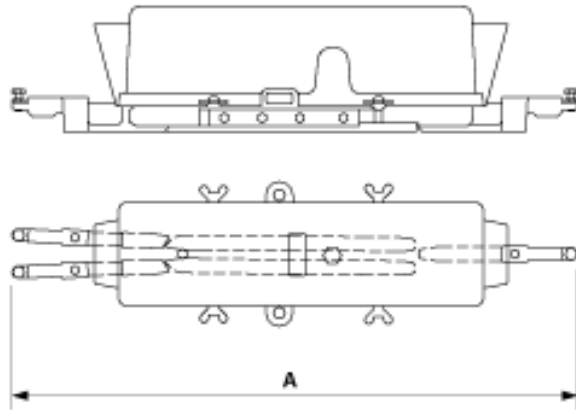


**B1176-11**

**SWITCH PIECE U99, MECHANICAL (TRAILING SWITCH), SLIDING PIECE  
BRONZE**



**DIMENSIONS**

A: 672 mm

**MATERIAL AND WEIGHT**

Weight: 5.600 kg

**COMMENTS**

- With transparent synthetic cover
- For tube connection
- Position of runners adjustable