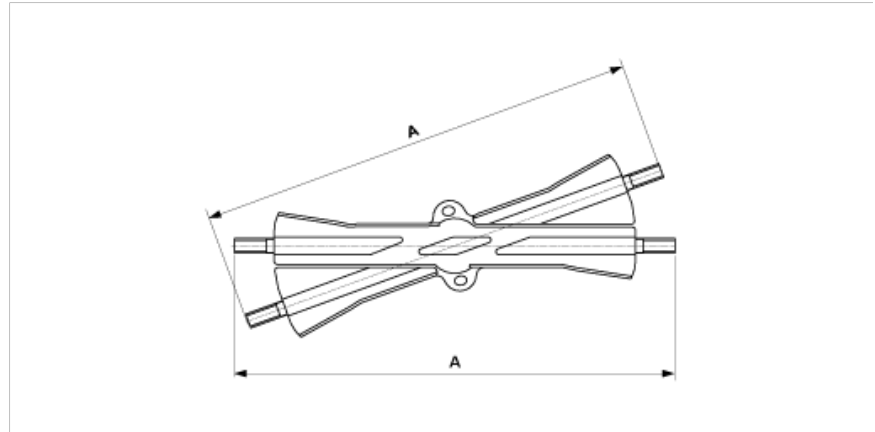


**C1155-01**

**CROSSING PIECE ETB-ETB, ADJUSTABLE, 20°–30°**



**DIMENSIONS**

A: 300 mm

**MATERIAL AND WEIGHT**

Material: Bz

Weight: 3.500 kg

**COMMENTS**

- Adjustable for crossing angles 20°-30°
- For tube connection