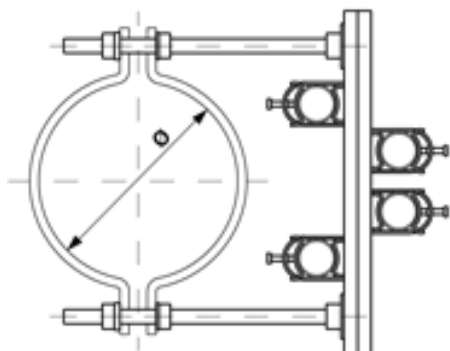


C1285-01

GUIDE FOR OPERATING ROD, FOR CONDUIT, TO ROUND POLES Ø = 200–280 MM



DIMENSIONS

Ø: 200–280 mm

MATERIAL AND WEIGHT

Weight: 3.830 kg

COMMENTS

- Pole clamp half, part no. C1231-... (2 pcs.)
(to be ordered separately)