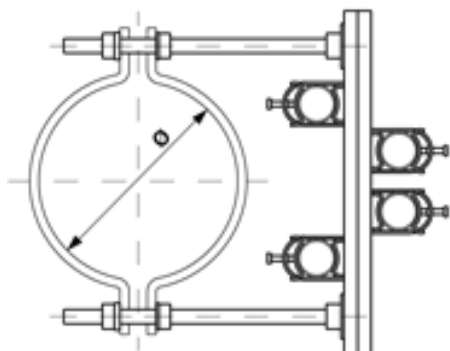


C1285-02

GUIDE FOR OPERATING ROD, FOR CONDUIT, TO ROUND POLES Ø = 285–410 MM



DIMENSIONS

Ø: 285–410 mm

MATERIAL AND WEIGHT

Weight: 4.770 kg

COMMENTS

- Pole clamp half, part no. C1231-... (2 pcs.)
(to be ordered separately)