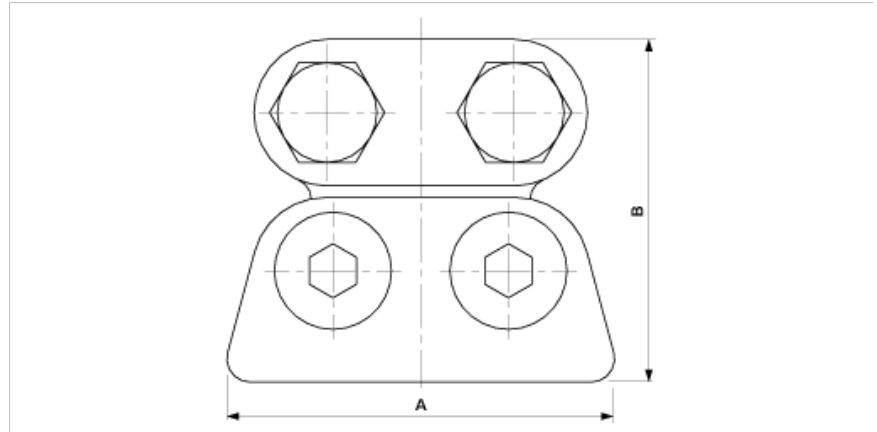


**D0446-01**

**FEEDER CLAMP ETB 50–95 MM<sup>2</sup>**



**DIMENSIONS**

A: 66 mm

B: 58 mm

**MATERIAL AND WEIGHT**

Weight: 0.445 kg

Material: Bz

**COMMENTS**

- For grooved contact wire 80-120 mm<sup>2</sup>

- For cables 50- 95 mm<sup>2</sup>