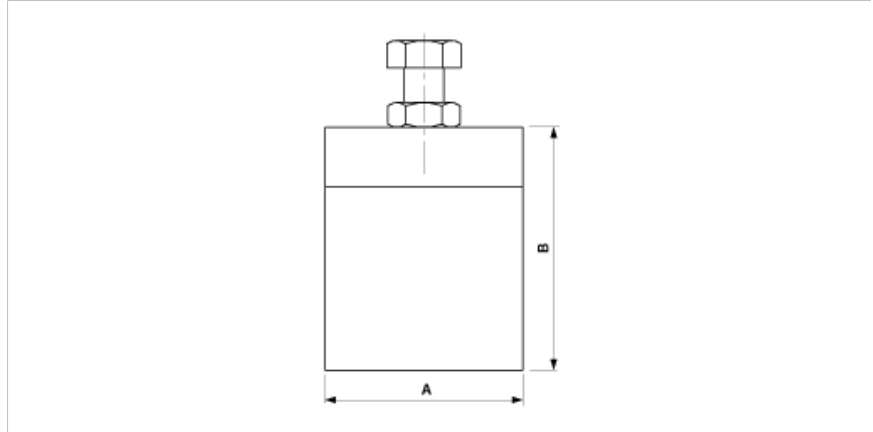


**D0804-01**

**CONNECTION COLLAR FOR COPPER TUBE, WITH 1 SCREW**



**DIMENSIONS**

B: 49 mm

A: 40 mm

**MATERIAL AND WEIGHT**

Material: Cu

Weight: 0.160 kg

**COMMENTS**

- For connection insulation rod or connector  
to switches or crossing pieces or section  
insulator ETB