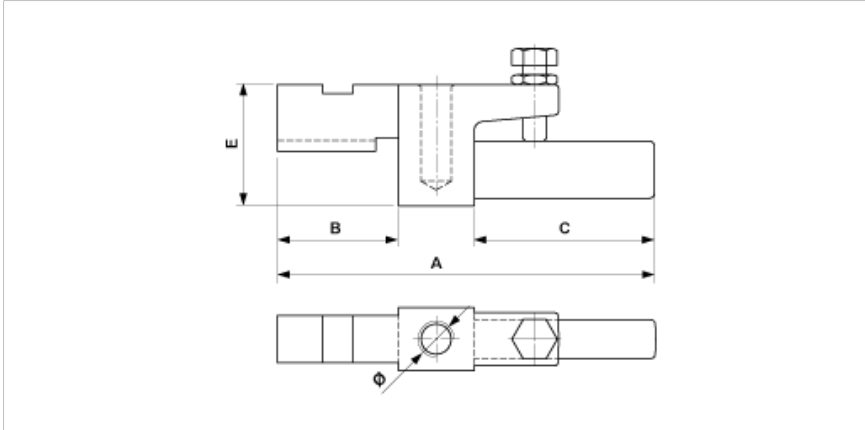


**D0837-01**

**CLAMPING PIECE COMPLETE**



**DIMENSIONS**

A: 125 mm

Ø: Ww 0.5" mm

C: 59.5 mm

E: 41 mm

B: 40 mm

**MATERIAL AND WEIGHT**

Weight: 0.410 kg

Material: Cu

**COMMENTS**

- Connection of insulation rod to Cu-tube
- With hexagon bolt and nut M8