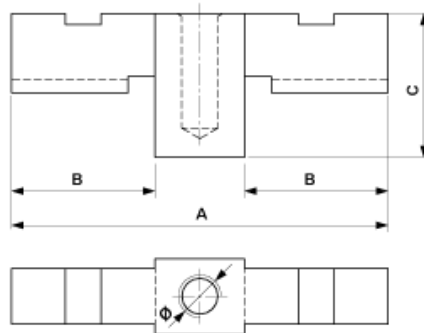


D1605-01

INSULATION ROD CONNECTOR



DIMENSIONS

C: 40 mm

B: 40 mm

A: 105 mm

Ø: Ww 0.5" mm

MATERIAL AND WEIGHT

Material: Bz

Weight: 0.335 kg

COMMENTS

- For connection of insulation rod (on both sides)