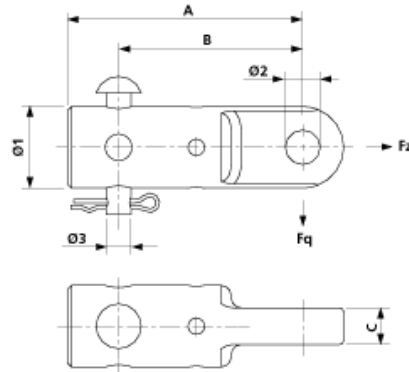


D2353-01

PIPE CONNECTOR WITH TONGUE, COMPLETE, TO PIPE G1.5"



DIMENSIONS

B: 90 mm

A: 115 mm

Ø1: 40.2 mm

Ø2: 17 mm

Ø3: 12 mm

C: 18 mm

MATERIAL AND WEIGHT

Material: Al/SST

Weight: 0.290 kg

LOADS

Breaking load F across: 15 kN

COMMENTS

- The pipe connector G2" and additionally the distance bushing part no. E 3259-01 must be used for pipe G2.5" w/reinforced wall
- Other pole diameter on request