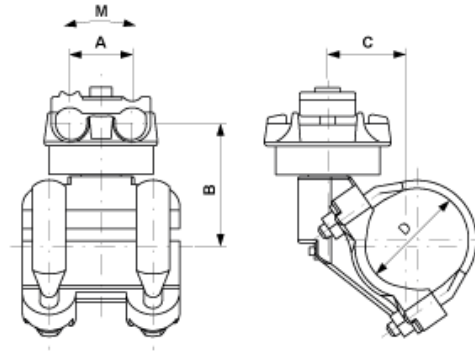


D2560-03

MESSANGER CABLE SUSPENSION NON INSULATED, ROTATABLE, REINFORCED, TO PIPE D = 70 MM, CABLE Ø MAX. 21 MM



DIMENSIONS

A: 49 mm

B: 93.5 mm

C: 61.8 mm

MATERIAL AND WEIGHT

Material: Al/SST

LOADS

Breaking moment M: 1900 Nm

COMMENTS

- The installation side of the messenger cable has to be selected so that the lateral force cause by the curve pull act in direction of the cap screw
- For cable diameter $\varnothing = 10-16$ mm and 21 mm
- Use for other cable diameter on request