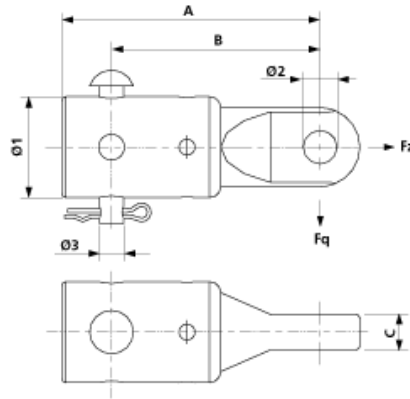


D2799-01

PIPE CONNECTOR WITH TONGUE, COMPLETE, TO PIPE $\varnothing = 70/7$ MM



DIMENSIONS

C: 18 mm
Ø2: 17 mm
Ø3: 12 mm
A: 130 mm
B: 105 mm
Ø1: 54.2 mm

MATERIAL AND WEIGHT

Material: Al/SST

LOADS

Breaking load F across: 15 kN

COMMENTS

- The pipe connector G2" and additionally the distance bushing part no. E 3259-01 must be used for pipe G2.5" w/reinforced wall
- Other pole diameter on request