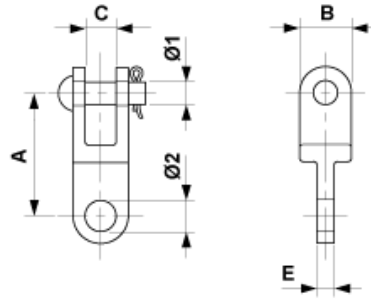


E0112-01

## CLEVIS TONGUE WITH PINS



### DIMENSIONS

B: 30 mm

C: 18 mm

E: 10 mm

A: 71 mm

Ø2: 18 mm

Ø1: 13 mm

### MATERIAL AND WEIGHT

Weight: 0.340 kg

Material: STL HDG

### LOADS

Breaking load: 50 kN