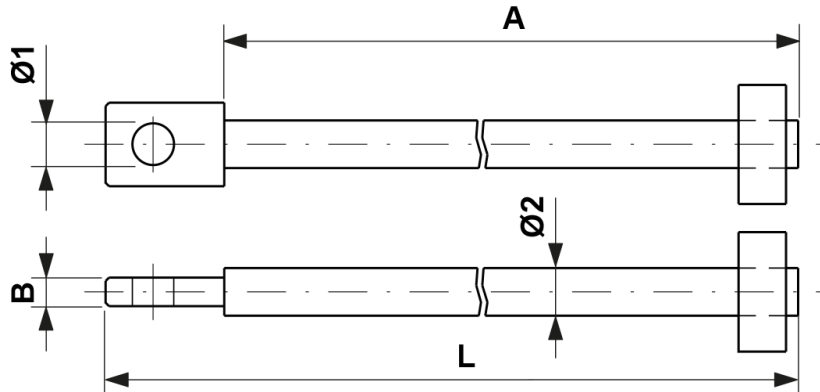


E0235-02

SUPPORT ROD FOR CAST IRON OR CONCRETE WEIGHTS, L = 2310 MM FOR
MAX. 12 CONCRETE RESP. 17 CAST IRON WEIGHTS



DIMENSIONS

$\varnothing 2$: 20 mm
 $\varnothing 1$: 17.5 mm
A: 2260 mm
L: 2310 mm
B: 12 mm

MATERIAL AND WEIGHT

Weight: 5.900 kg
Material: STL HDG