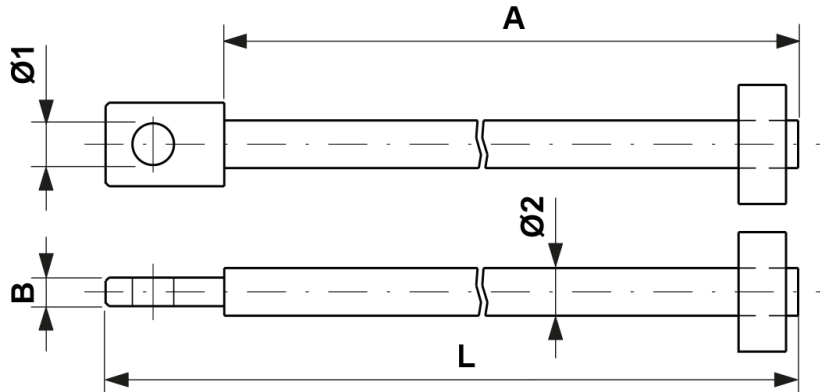


E0235-03

SUPPORT ROD FOR CAST IRON OR CONCRETE WEIGHTS, L = 2810 MM FOR
MAX. 15 CONCRETE RESP. 20 CAST IRON WEIGHTS



DIMENSIONS

B: 12 mm

$\varnothing 2$: 20 mm

$\varnothing 1$: 17.5 mm

A: 2760 mm

L: 2810 mm

MATERIAL AND WEIGHT

Weight: 7.300 kg

Material: STL HDG