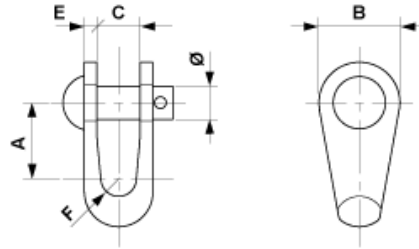


E0928-01

SHACKLE FOR LOOP INSULATOR, WITH PIN, STL HDG



DIMENSIONS

Ø: 13 mm

B: 32 mm

C: 17 mm

E: 5 mm

F: 7 mm

A: 30 mm

MATERIAL AND WEIGHT

Material: STL HDG

Weight: 0.190 kg

LOADS

Breaking load: 50 kN