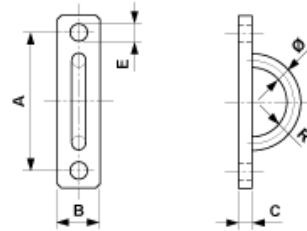


E1234-01

ANCHOR PLATE HORIZONTAL WITH EYE, $\varnothing = 16$ MM



DIMENSIONS

R: 40 mm

\varnothing : 16 mm

A: 160 mm

B: 50 mm

C: 16 mm

E: 20 mm

MATERIAL AND WEIGHT

Weight: 1.340 kg

Material: STL HDG

COMMENTS

- To be used on fair-faced concrete fronts, concrete bearing walls, concrete pillars, etc.
- Mounting parts (to be ordered separately):
 - On Unistrut channel type 3B
2 T-bolts M16 x 40 with hexagon nut
part no. 352346
 - 2 washers 17/34 x 3, part no. 350480
 - On slush anchor M16
2 hexagon screw M16 x 50, part no. 350360
 - 2 washers 17/34 x 3, part no. 350480
- Recommended load depends on the type of attachment
- Application recommendations on request