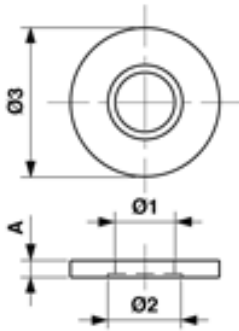


E1343-03

INSULATING SLEEVE, M30 FOR POLE WITH BASE PLATE

für Mast mit Fussplatte
pour mât avec plaque de base
for pole with base plate



für Hängestütze zu Tunnelstützpunkt
pour support suspendu au plafond pour
support en tunnel
for drop bracket for tunnel support



DIMENSIONS

A: 38 mm

Ø2: 38 mm

Ø1: 31 mm

MATERIAL AND WEIGHT

Material: GRP

Weight: 0.020 kg

SPECIFICATIONS

Breakdown voltage: 12 kV/mm (for all insulating sleeves)