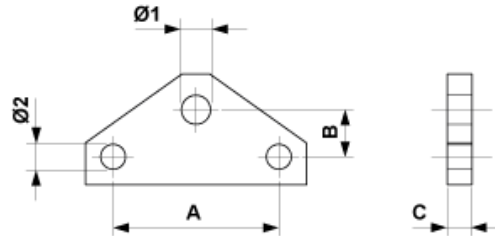


**E1624-01**

**TRIANGULAR PLATE SIMPLE**



**DIMENSIONS**

Ø2: 18 mm

C: 20 mm

A: 120 mm

B: 34 mm

Ø1: 21 mm

**MATERIAL AND WEIGHT**

Material: STL HDG

Weight: 1.300 kg

**LOADS**

Breaking load: 110 kN