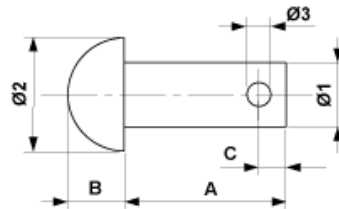


E3232-01

PIN, 12 X 60



DIMENSIONS

A: 60 mm

B: 8 mm

Ø2: 22 mm

Ø1: 12 mm

C: 5.8 mm

Ø3: 5.7 mm

MATERIAL AND WEIGHT

Weight: 0.071 kg

Material: SST

COMMENTS

- The split pin have to be ordered separately
- Additional executions on request