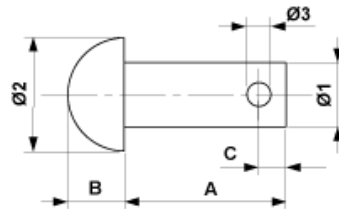


E3232-06

PIN, 16 X 100



DIMENSIONS

Ø1: 16 mm

A: 100 mm

C: 5.8 mm

Ø3: 5.7 mm

B: 10.000 mm

Ø2: 26 mm

MATERIAL AND WEIGHT

Material: SST

COMMENTS

- The split pin have to be ordered separately
- Additional executions on request