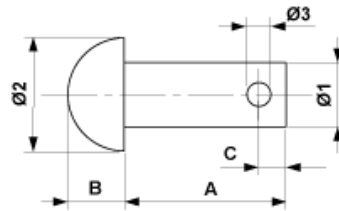


**E3232-08**

**PIN, 12 X 100**



**DIMENSIONS**

B: 8 mm

A: 100 mm

Ø2: 22 mm

Ø1: 12 mm

C: 5.8 mm

Ø3: 5.7 mm

**MATERIAL AND WEIGHT**

Material: SST

**COMMENTS**

- The split pin have to be ordered separately
- Additional executions on request