

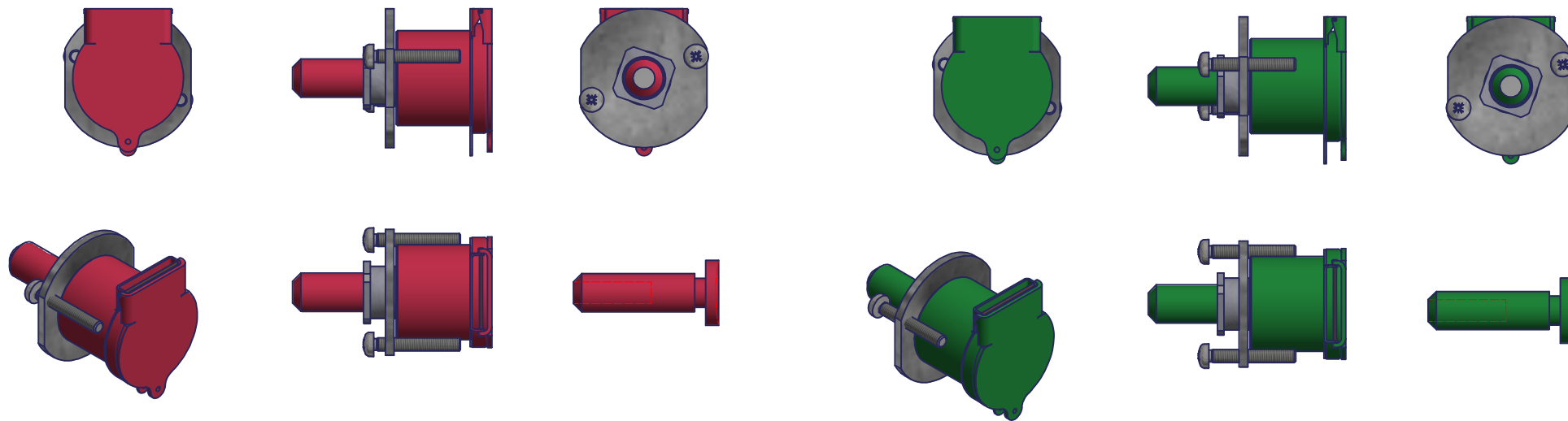


Tête Plombable Poussoir Noir
Art. M050220300

Poussoir R15 pour tête plombable

Tête Plombable Poussoir Jaune
Art. M050220400

Poussoir R15 pour tête plombable



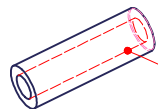
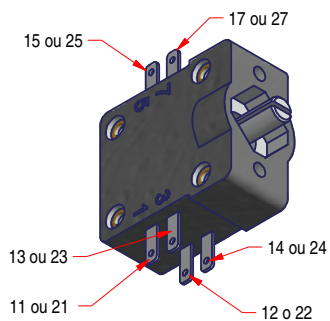
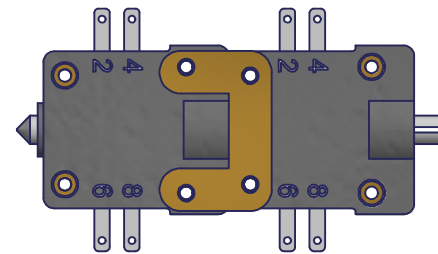
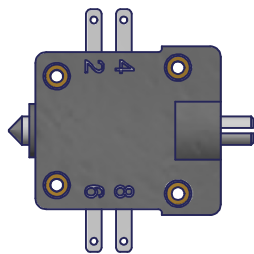
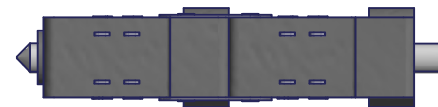
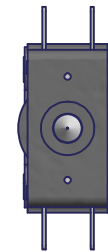
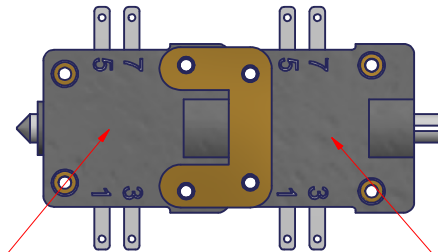
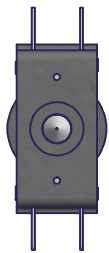
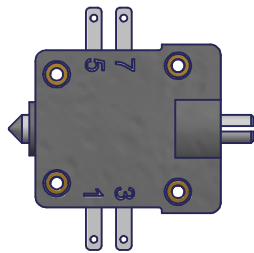
Tête Plombable Poussoir Rouge
Art. M050220100

Poussoir R15 pour tête plombable

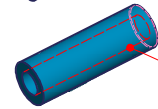
Tête Plombable Poussoir Vert
Art. M050220200

Poussoir R15 pour tête plombable

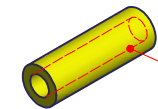
Schweitzer Têtes plombables Boutons poussoirs



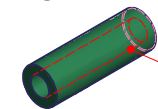
M050220500



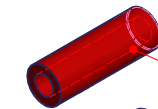
M050220600



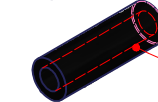
M050220700



M050220800



M050220900



M050221000

Dans les schémas pour le 2^{ème} corps on ajoute 2 devant le chiffre des contacts ce qui donne 21 - 22 / 23 - 24 etc...

Dans les schémas pour le 1^{er} corps on ajoute 1 devant le chiffre des contacts ce qui donne 11 - 12 / 13 - 14 etc...

Poussoir simple 2O / 2F sans maintien DT 22 R9 Z Art. **M050210200**

Poussoir simple 2O / 2F avec maintien DS 22 R9 Z Art. **M050210300**

Têtes de poussoir R9

indiquer la couleur lors de la commande

Poussoir double 4O / 4F sans maintien DT 44 R9 Z Art. **M050210400**

Poussoir double 4O / 4F avec maintien DS 44 R9 Z Art. **M050210500**

Schweitzer Corps de boutons poussoirs